



**Motor Control Centres**

# MOTOR CONTROL CENTRES (MCCs)

Trant Control and Automation division, design and custom build a wide range of high quality Motor Control Centres. We offer conventional, intelligent and withdrawable systems with outstanding reliability and functionality.

### Services

- Full design service, including site surveys & Harmonic Analysis.
- Comprehensive factory acceptance testing (FAT).
- Comprehensive warranty on all products.
- Full installation, site acceptance testing (SAT) and commissioning services.
- Detailed operation and maintenance manuals.
- Technical support and advice.



Panel construction is available in a variety of configurations with front and rear access, top or bottom cable entry, conventional and withdrawable component options.

All metalwork is manufactured to a high standard incorporating ASTA certified busbar systems, in compliance with the LV Directive (BS EN 61439-2:2011) and the EMC Directive.

To ensure complete client satisfaction, all our products are comprehensively tested, and comply with all industry standards, health and safety requirements and all relevant certifications.

All Motor Control Centres are supplied with a Declaration of Conformity confirming compliance to BS EN 61439-2:2011, LV Directive and the EMC Directive.

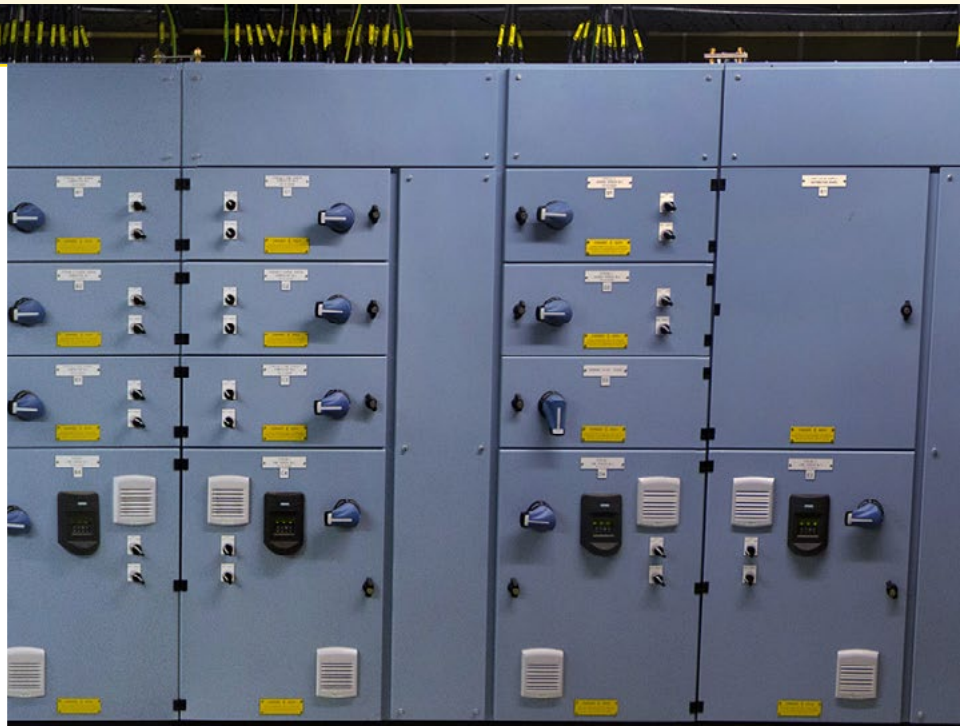
## Example projects

### Portsmouth Water - Intelligent MCC

Design and manufacture of a 'Form 4' MCC within a custom built steelwork.

Busbar rating of 800A with a fault rating of 50kA for 1 sec. The MCC functional units included the following:

Two 800A Four pole Mains Generator Incomer ACB Sections complete with automatic change over, two 132kW VFD starter sections and one 110kW VFD starter section using ABB ACS800 VFD's, eight number fuseswitch feeders of various sizes. Controlled via a Common Controls section containing Schneider M340PLC and Magelis HMI allowing full automatic control of UV disinfection process.



### Southern Water - Conventional MCC

Design and manufacture of a 'Form 4' MCC within a custom built steelwork.

Busbar rating of 2000A with a fault rating of 50kA for 1 sec. The MCC functional units included the following:

One 1250A Four pole Mains Incomer ACB Section, Seventeen Variable frequency starters using ABB ACS800 VFD's, four DOL starter sections and two ASD starter sections. Controlled via a Common Controls section containing Mitsubishi Q series PLC and E1151 Pro+ HMI allowing full automatic control of water treatment process.



### Trant Engineering Ltd.

Rushington House  
Rushington  
Southampton  
United Kingdom  
SO40 9LT

+44 (0) 2380 665544  
enquiries@trant.co.uk  
www.trant.co.uk

